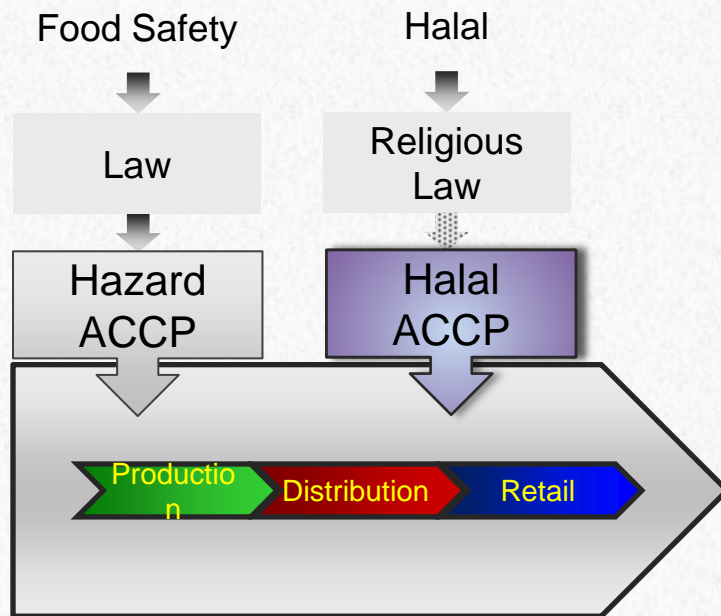


Halal Supply Chain - Case Study

SEA : Asie du Sud-Est
et Halal : opportunités
jumelles pour
l'industrie alimentaire



Waterloo, 24.3.2017



Integrating and Assuring Halal



In Non Halal Environments



By Balancing
Different
Requirements

International Halal Supply Chain

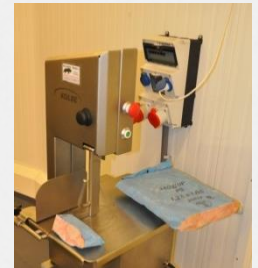


Port of Zeebrugge Halal Hub

Inbound
Outbound

Border
Inspection Post

Value Added
Logistics



Methodology

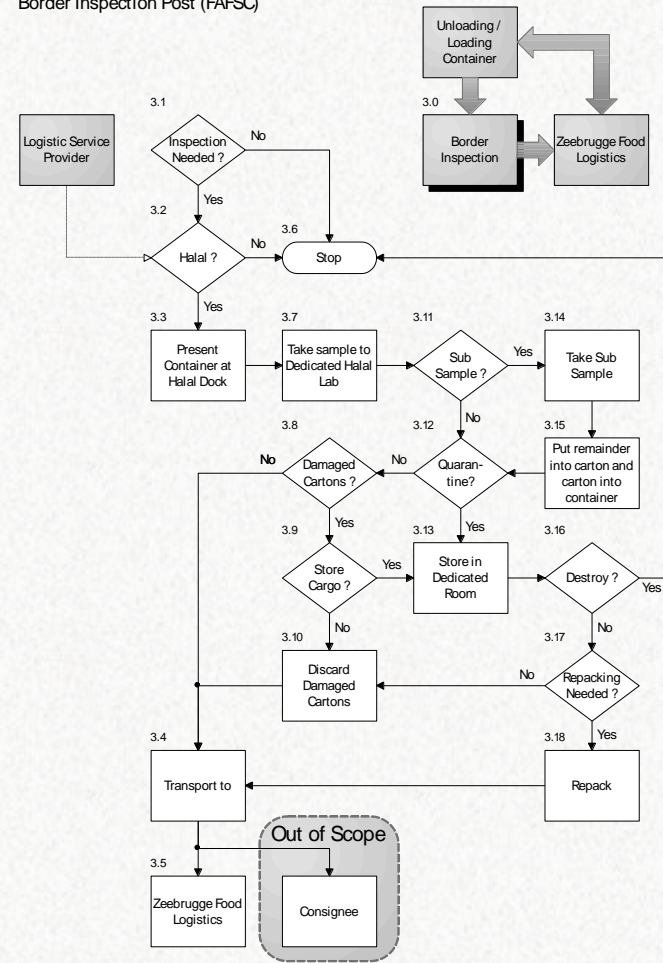
MS2400

Determination of Halal Critical Control Points (HCCP)

Probability	Impact		
	Critical	Moderate	Low
High	HCCP	HCCP	Monitor
Moderate	HCCP	Monitor	-
Low	Monitor	-	-

Halal Balancing, adapted from MS2400

Border Inspection Post (FAFSC)



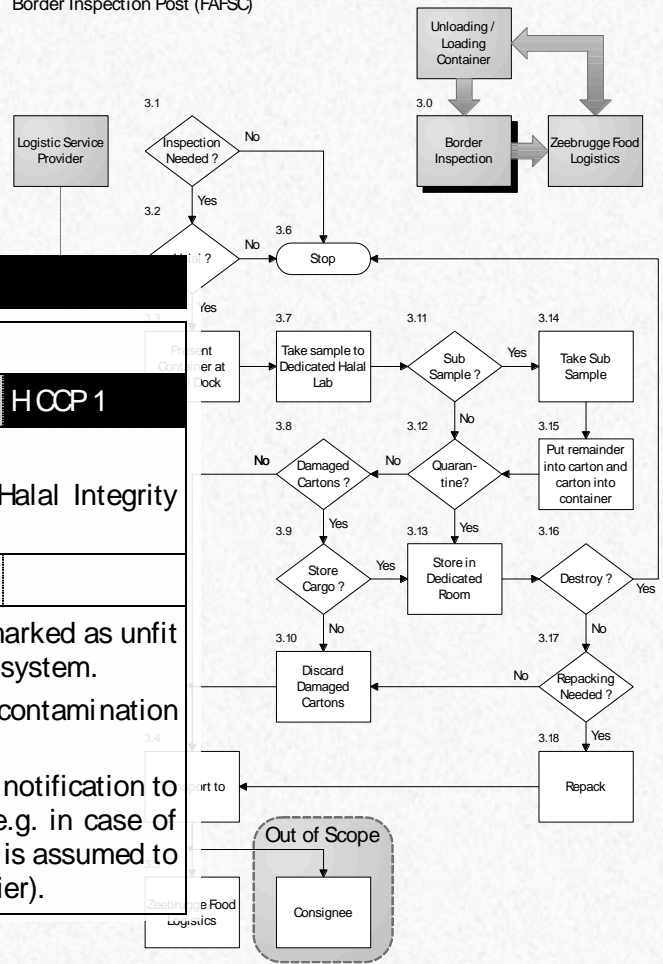
Methodology



MS2400

Step	4.12				
Risk	Cross contamination of damaged product				
Probability	Moderate	Impact	Critical	Halal CCP	H CCP 1
Products with damaged primary packaging are put in a quarantine area. Within this quarantine zone, cross contamination could occur and lost Halal Integrity cannot be restored.					
Halal CCP Control Measurement					
Products that are put in the Quarantine zone are, as a legal requirement, marked as unfit for human consumption and blocked for further handling through the WMS-system.					
Products that were damaged by ZLF itself are destroyed, avoiding further contamination of the remainder of the cargo.					
Products that were damaged while unloading a container or truck are, after notification to the Logistic Provider/client, either destroyed or sent back to the client (e.g. in case of damage of most of the cargo). In the latter case, maintaining Halal Integrity is assumed to be lost unless proven otherwise (e.g. after consultation with the Halal Certifier).					

Border Inspection Post (FAFSC)



Experience



It takes **three** to tango

MS2400 : risk based, built in pragmatism

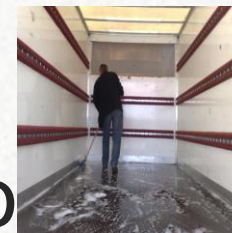
Subcontracted supply chain

Data flow

Clear responsibilities

Terminology – what is what ?

Mixed transport – previous cargo



Experience



It takes **three** to tango

MS2400 : risk based, built in pragmatism

Subcontracted supply chain

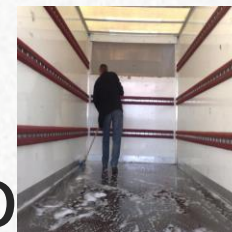
Data flow

Clear responsibilities

Terminology – what is what ?

Mixed transport – previous cargo

More dancing partners needed



Experience



It takes three to tango
MS2400 : risk based, pragmatism built in
Subcontracted supply chain

Data flow

Clear responsibilities

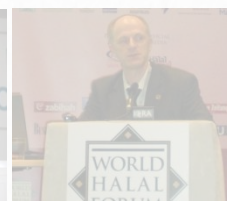
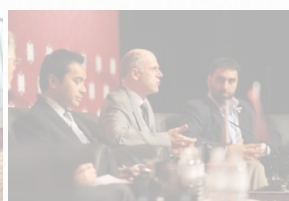
Terminology – what is what ?

Mixed transport – previous cargo

More dancing partners needed



Assuring and Integrating Halal In Non-Halal Environments



Koen De Praetere, M : +32 491 95 66 80, koen.de.praetere@halalbalancing.com, www.halalbalancing.com